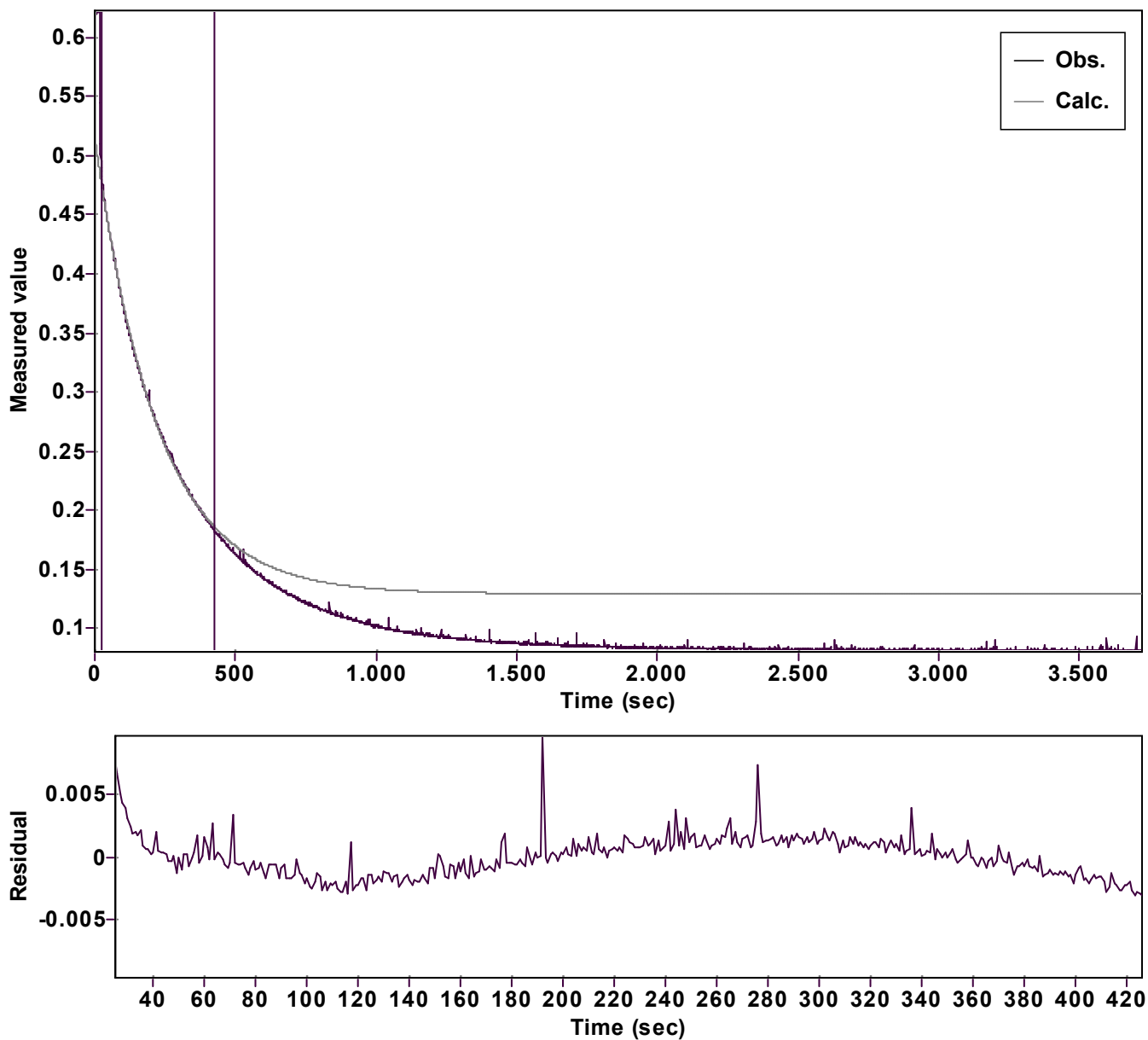


Evaluation of kinetic data with ExpoFit V 1.3

Graph



Function: y = A exp (-kx) + C (Exponential decrease)		Reference point: C (of function)	
Amp A = 0.386500534269987 Â± 0.000522329156274		Quality r ² = 0.9995901291654	
Rate k = 0.004520121490268 Â± 0.000021045925328		Data points = 402 of 3724	
Final C = 0.129494122559410 Â± 0.000728464402915		Conversion = 60.8 %	
Start at position: 25 / 0.48238 (28.4 %)		End at position: 426 / 0.18266 (89.2 %)	
ExpoFit file: Vinylazide_20 equiv_pfa+Nu_c01_000 (Data-ExtracDate of file: exp06/10/2025 22:06:54			
Source file: Vinylazide_20 equiv_pfa+Nu_c01_000 (Data-ExtracDate of file: txt 06/10/2025 21:53:14			
Type of source file: Universal ASCII - file data			
2007 by Dr. Kempf		Date of print: 16/10/2025 10:23:37	